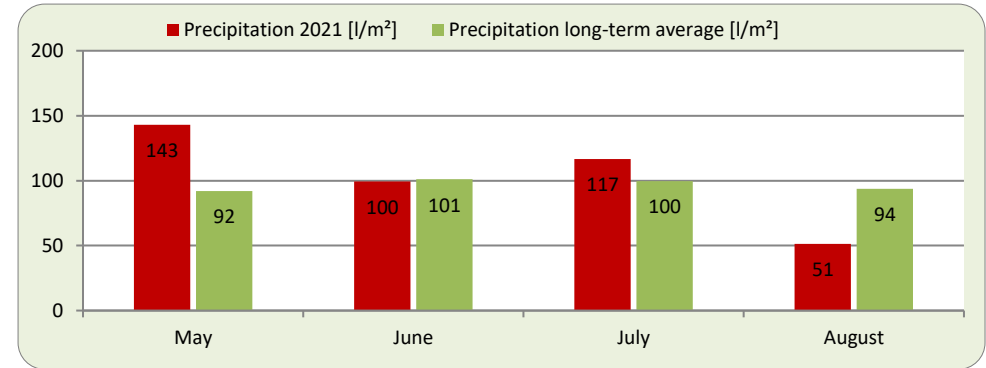
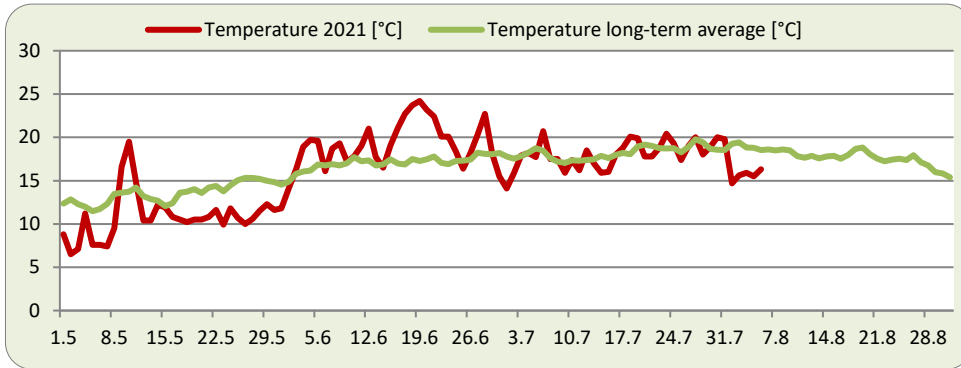


# Report on Weather and Hop Growing Conditions: Week 31

Report Period: August 2, 2021 - August 8, 2021

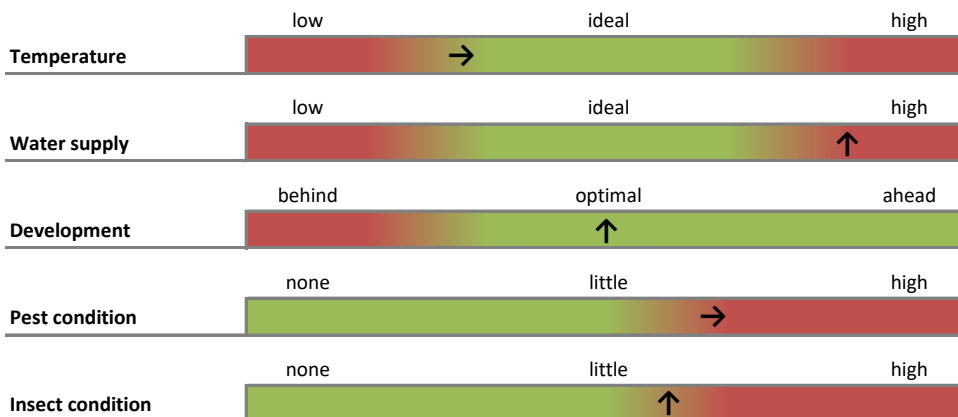
## HALLERTAU



**Comments:** A cool and rainy week delayed development. The wet and saturated soils prevented passability. Only in rare cases and under difficult conditions, urgently needed sprayings against downy mildew were applied. Early varieties such as Northern Brewer and Hallertau Mittelfrüh showed first signs of lupulin formation. The overall impression is positive.

Variety	Comment	Development
Tradition	Cone development / start of lupulin formation	O/+
Perle	Start of cone development	O/+
Magnum	Start of cone development	+
Herkules	Start of cone development	+

(++ very good; + good; o average; - weak; -- very weak)



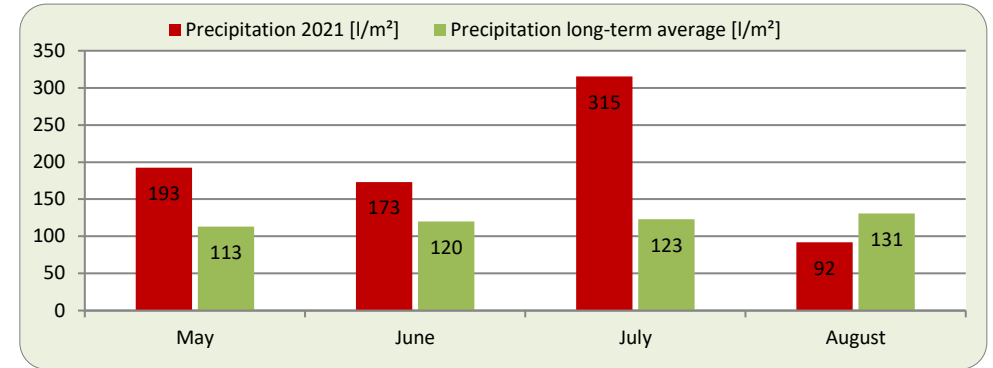
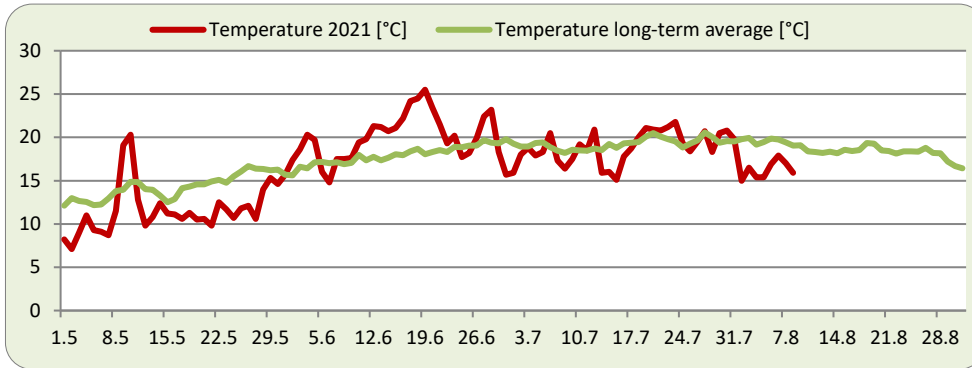
(Tendency: stable ↑, decreasing ←, increasing →)



# Report on Weather and Hop Growing Conditions: Week 31

Report Period: August 2, 2021 - August 8, 2021

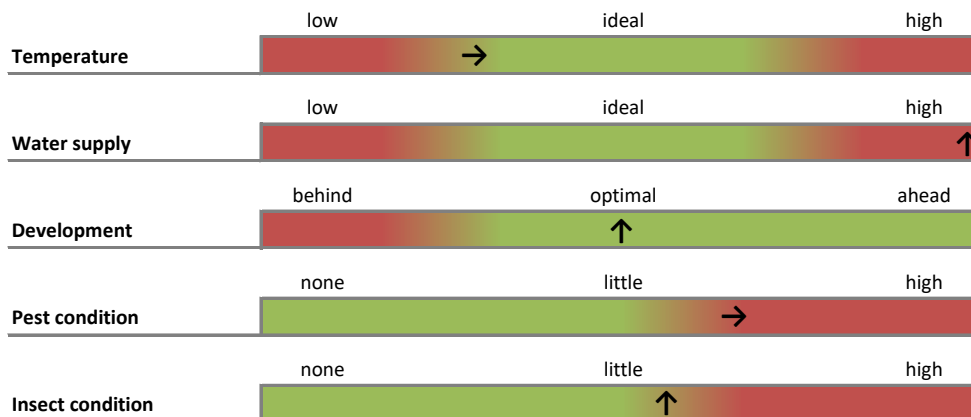
## TETTNANG



Variety	Comment	Development
Tettnanger	Cone development	+
Mittelfrüher	Cone development	+
Tradition	Cone development	+
Herkules	Cone development	+

**Comments:** The first week of August was consistently too cool and wet with thundershowers. The soils remained saturated and hardly passable, so development was also slow here. Another spraying call against Peronospora could only be followed under difficult conditions.

(++ very good; + good; o average; - weak; -- very weak)



(Tendency: stable ↑, decreasing ←, increasing →)

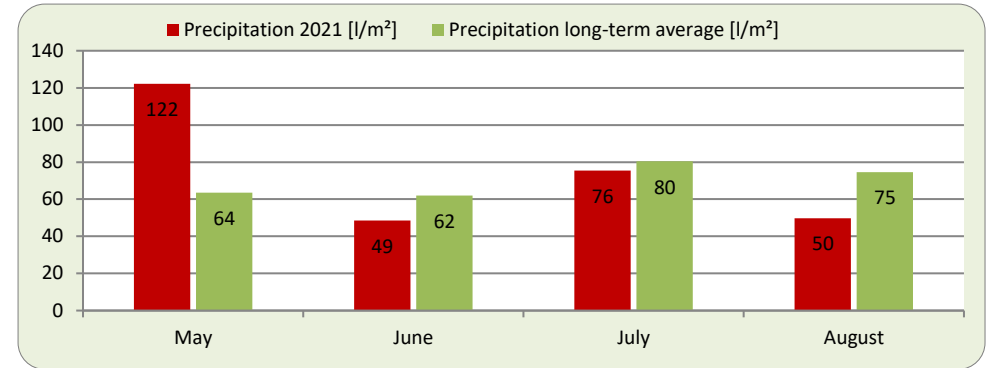
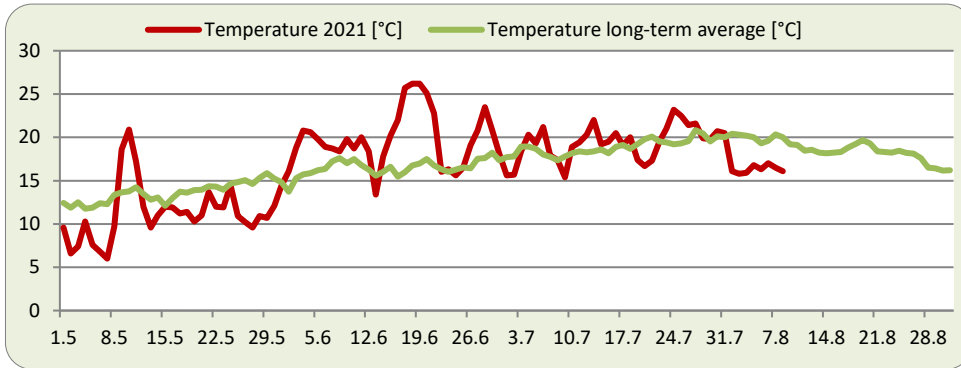




# Report on Weather and Hop Growing Conditions: Week 31

Report Period: August 2, 2021 - August 8, 2021

## ELBE SAALE

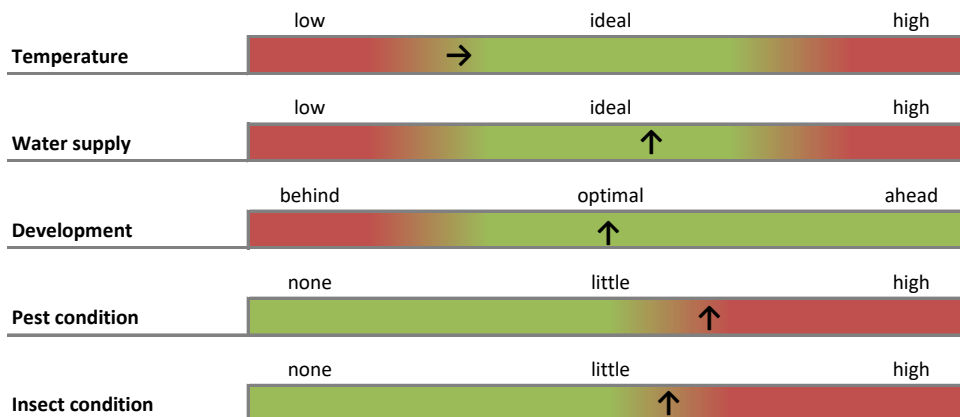


Variety	Comment	Development
Perle	Full flowering / start of cone development	+
Northern Brewer	cone development	+
Magnum	Full flowering	+
Herkules	Full flowering / start of cone development	+

**Comments:** Rainfall was also abundant last week, so that the water supply remains good. When passability was given, plant protection measures - mainly preventive - were carried out against downy mildew and powdery mildew.



(++ very good; + good; o average; - weak; -- very weak)



(Tendency: stable ↑, decreasing ←, increasing →)